



# Probability Simulation

## Quick reference sheet

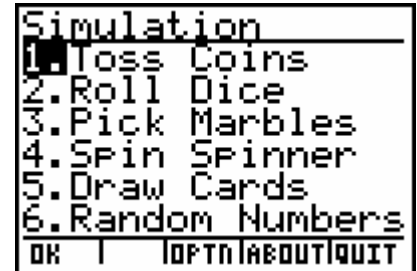
To Start:  choose Prob Sim. 



APP  
Version  
1.1

To control the options seen at the bottom of the windows, use the “graphing” buttons immediately below the window.

**Choose** from the six options. (The OPTN option at the bottom of the window will allow you to reseed the random number generator.)



### Toss Coins Settings:

To control settings, select **SET** at the bottom of the window.

**Trial Set** – set to 1 by default (one trial will occur for TOSS)

**Coins** – defaults to 1 (# of coins flipped)

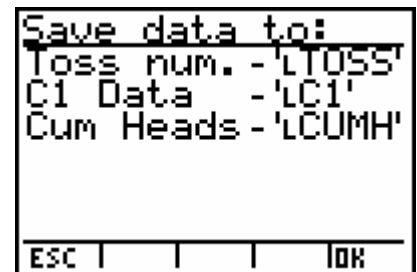
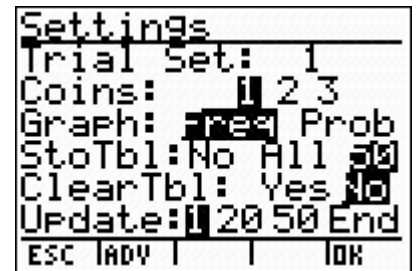
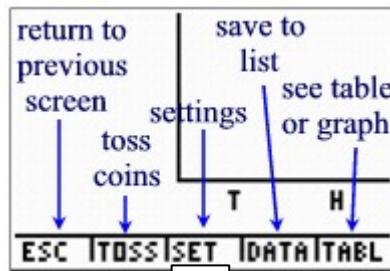
**Graph** – set to Freq displays the number heads that occurred. Set to Prob displays the relative ratio that has occurred for that coin.

**StoTbl** – defaults to All (when set to No, only the graph can be viewed and no table data can be seen. The only other option is 50.)

**ClearTbl** – is set automatically when other settings are chosen

**Update** - defaults to 1 (how many trials occur before the graph is updated)

**The ADV option** at the bottom of the setting screen will allow you to change weights to simulate unfair situations.



Data collection can be saved to lists.

### Roll Dice/Pick Marbles/Spin Spinner

The remaining choices have basically the same “settings” as the Coin Toss.

**Roll Dice:** Sides – the number of sides the die will have.

**Pick Marbles:** Type – the number of lettered marbles.

**Spin Spinner:** Sections – sections on spinner (between 2 and 8)

### Draw Cards

Settings:

**Decks** – defaults to 1 (can be 1 to 3)

**Replace** – yes = card replaced (R appears);  
no = card is removed from deck

**Deck Size** – default to 52  
(or can be European deck of 32).

### Random Numbers

Settings:

**Number:** how many random numbers are drawn  
(from 1 to 6)

**Range:** the range of the numbers to be chosen  
(0 to 99)

**Replace:** If YES, numbers are replaced and can be chosen again.

**When finished**, ESC to the simulation choice screen, choose QUIT at the bottom right of window.